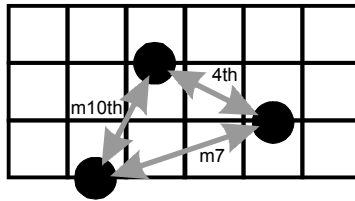


# "GRIP" #1

Fingering

Fingerboard

3  
2  
1



Built on scale tone	Chord tones	Chord Quality	Scale and Mode	
Δ7th #5th	Δ7, 9, 13 #5, #11, Δ7	major only major only	C major A melodic minor (C whole tone-diminished)	
b7th b3rd (#9th)	b7, b9, #5 #9, #11, root	dominant (alt) dominant (b9 or alt)	D $\flat$ melodic minor (C diminished-whole tone) C half step-whole step	
6th (13th) 3rd #11th	6, root, 5 3, 5, 9 #11, 13, 3	major or dominant major or dominant major or dominant	<b>MAJOR</b> C major C major G major, or A mel min	<b>DOMINANT</b> F major, or G mel min F major G mel min
5th	5, b7, sus4	sus	F major	
root	root, b7, b3	minor seventh	B $\flat$ major (C Dorian)	
root	root, b7, b3	half diminished	D $\flat$ maj, or E $\flat$ mel min, or D $\flat$ mel min	

Chord Quality

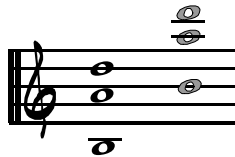
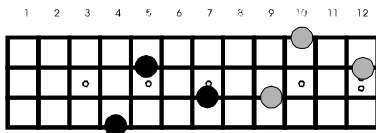
Fingerboard

Notation

Chord Tones

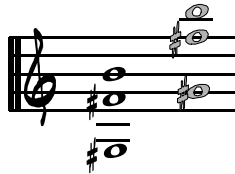
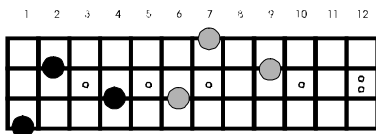
Chord Symbol

Major



9th  
6th (13th)  
Δ7th

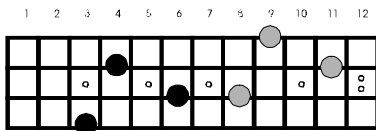
C $\Delta$  or C $\Delta^6$



Δ7th  
#11th  
#5th

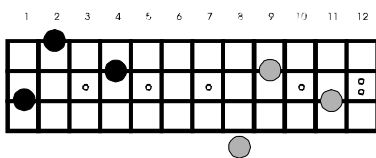
C $\Delta$ (#5)

Dominant



b9th  
#5th  
7th

C $\Delta$ ALT



#11th  
b9th  
#9th

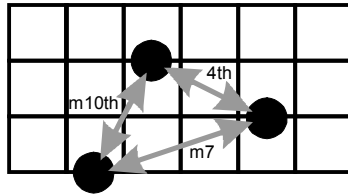
C $\Delta$ (b9) or C $\Delta$ (#9) or C $\Delta$ DIM

# GRIP #1, pg2

Fingering

Fingerboard

3  
2  
1



Chord Quality

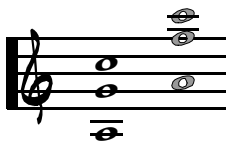
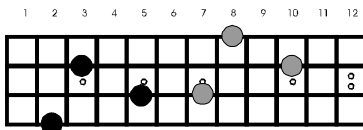
Fingerboard

Notation

Chord Tones

Chord Symbol

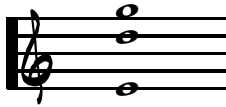
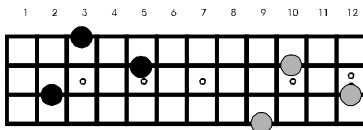
Major or Dominant



root  
5th  
6th (13th)

maj  
C<sup>ADD 6</sup>

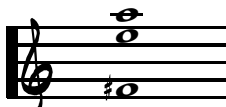
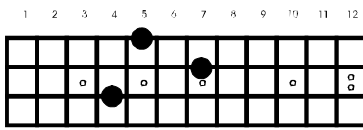
dom  
C<sup>13</sup>



5th  
9th  
3rd

C<sup>Δ9</sup>

C<sup>9</sup>

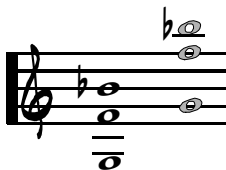
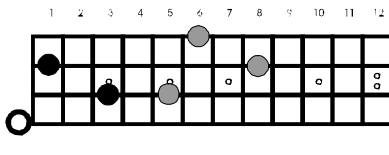


13th  
3rd  
#11th

C<sup>Δ13</sup>

C<sup>13</sup>

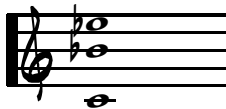
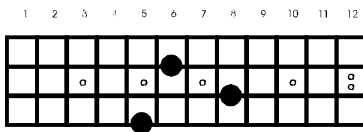
Sus



b7th  
4th  
5th

C<sup>SUS</sup>

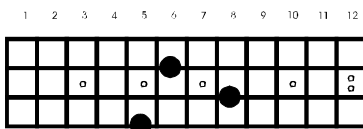
Minor Seventh



b3rd  
b7th  
root

C<sup>M7</sup>

Half-Diminished (minor seventh, flat five)



b3rd  
b7th  
root

C<sup>M7(b5)</sup> or C<sup>ø</sup>